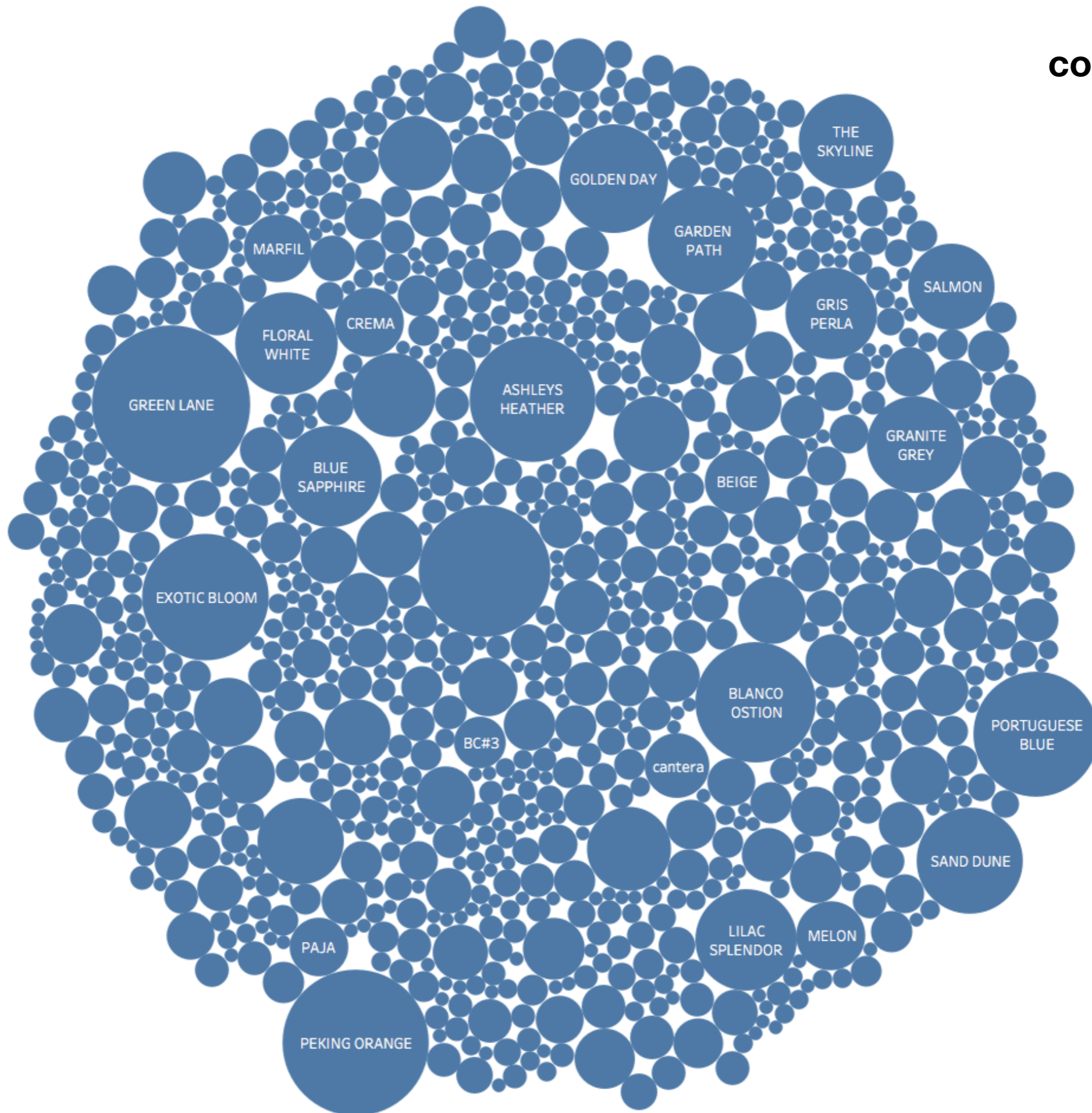
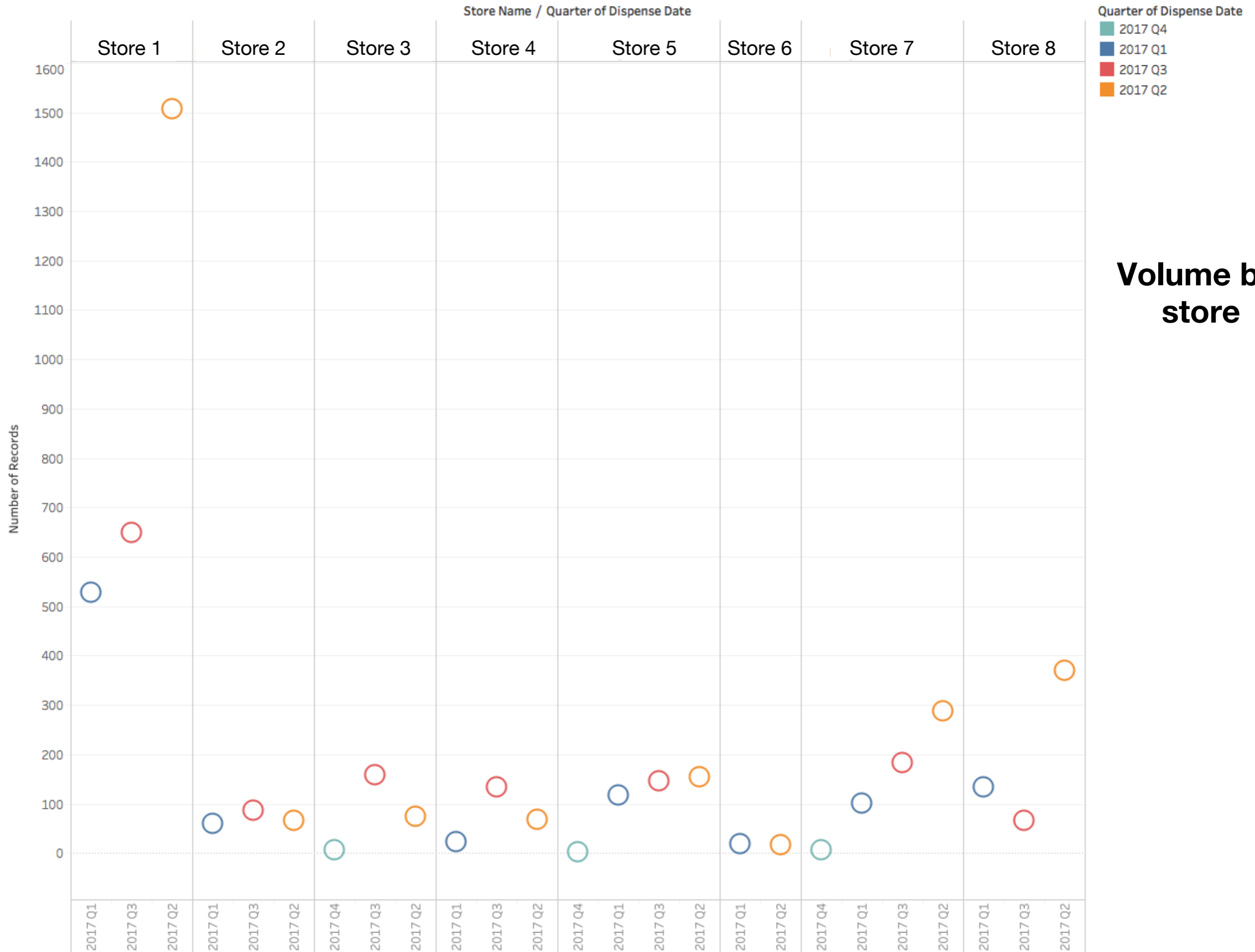


Most common used colors

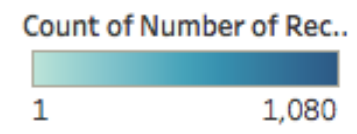


Formula Name. Size shows count of Number of Records. The marks are labeled by Formula Name.



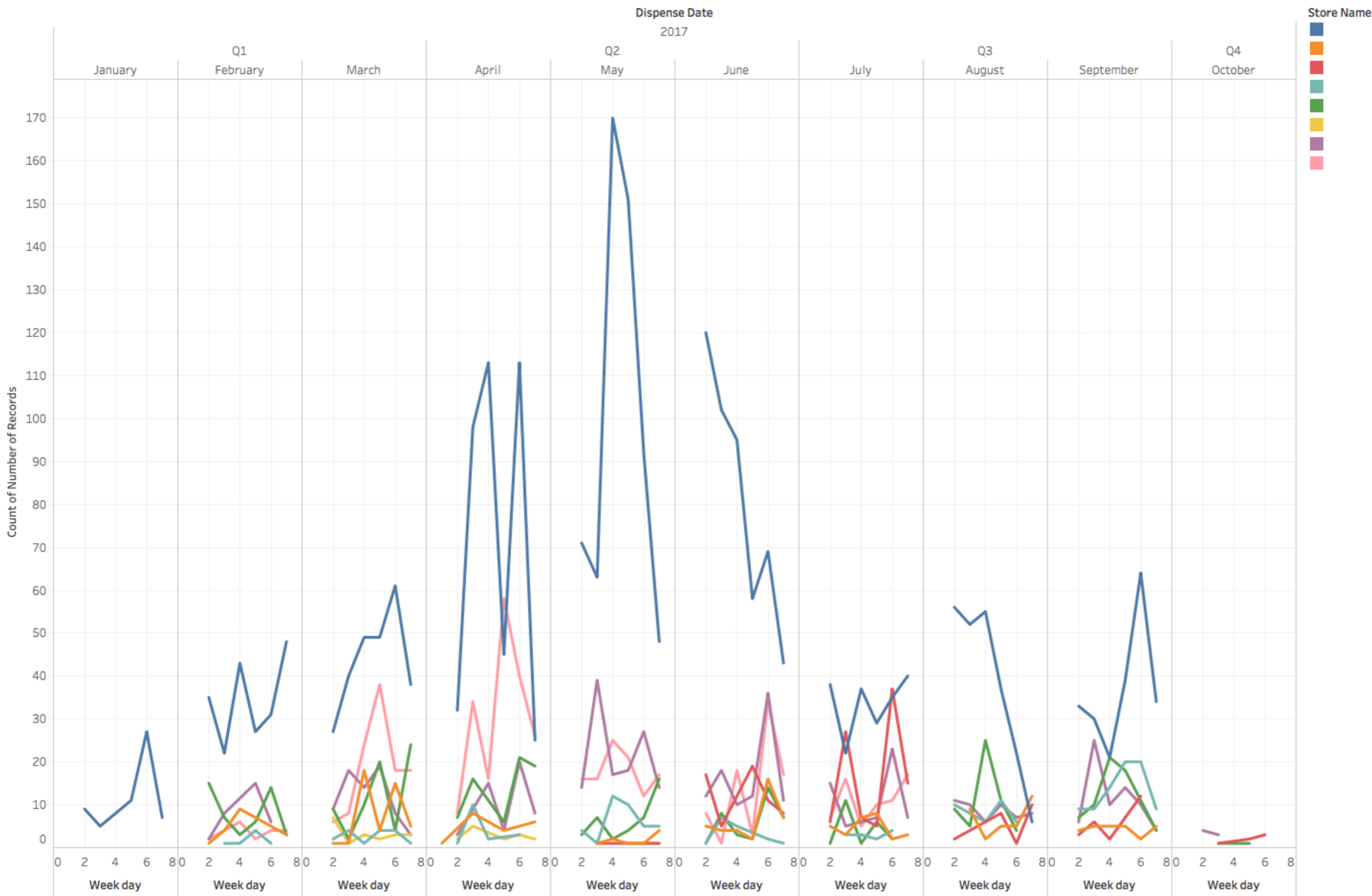
Sum of Number of Records for each Dispense Date Quarter broken down by Store Name. Color shows details about Dispense Date Quarter.

| Quarter of Dispense D.. | Can Size | Store Name | | | | | | | | Count of Number of Rec.. |
|-------------------------|-----------|------------|---------|---------|---------|---------|---------|---------|---------|--------------------------|
| | | Store 1 | Store 2 | Store 3 | Store 4 | Store 5 | Store 6 | Store 7 | Store 8 | |
| 2017 Q1 | 5 Gallons | 128 | 18 | | 1 | 23 | 3 | 30 | 34 | |
| | 1 Quart | 224 | 37 | | 15 | 58 | 5 | 48 | 58 | |
| | 1 Gallon | 177 | 6 | | 7 | 36 | 11 | 24 | 42 | |
| 2017 Q2 | 5 Gallons | 1,080 | 20 | 15 | 19 | 46 | 3 | 40 | 124 | |
| | 1 Quart | 243 | 29 | 31 | 38 | 55 | 8 | 190 | 146 | |
| | 1 Gallon | 185 | 17 | 29 | 12 | 53 | 6 | 57 | 100 | |
| 2017 Q3 | 5 Gallons | 196 | 23 | 92 | 24 | 39 | | 15 | 22 | |
| | 1 Quart | 238 | 36 | 27 | 85 | 79 | | 132 | 14 | |
| | 1 Gallon | 216 | 28 | 39 | 25 | 28 | | 37 | 30 | |
| 2017 Q4 | 5 Gallons | | | 4 | | | | 2 | | |
| | 1 Quart | | | 1 | | 1 | | 4 | | |
| | 1 Gallon | | | 1 | | 1 | | 1 | | |



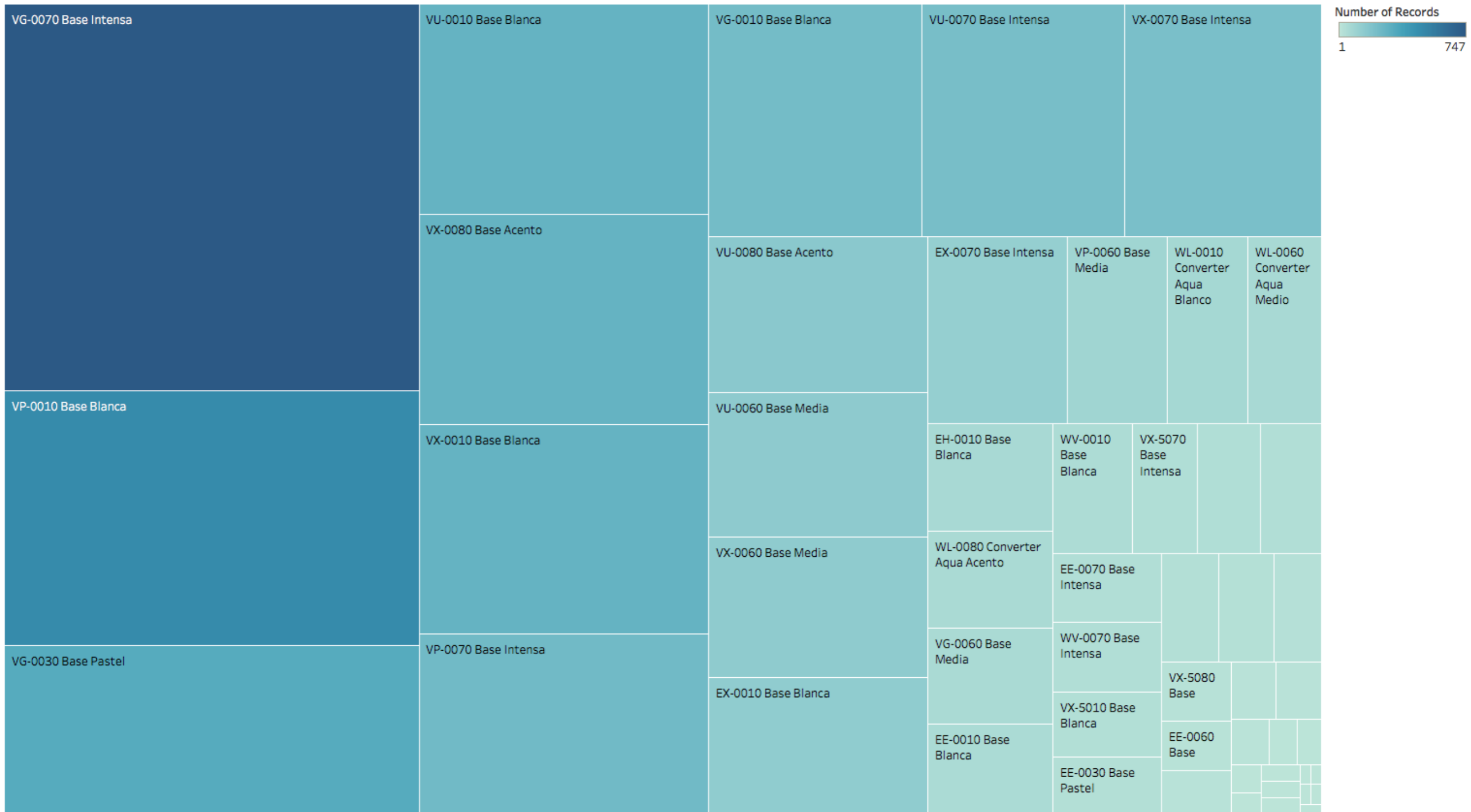
Count of Number of Records broken down by Store Name vs. Dispense Date Quarter and Can Size. Color shows count of Number of Records. The marks are labeled by count of Number of Records.

Trend by week day



The trend of count of Number of Records for Week day broken down by Dispense Date Year, Dispense Date Quarter and Dispense Date Month. Color shows details about Store Name.

Most used bases



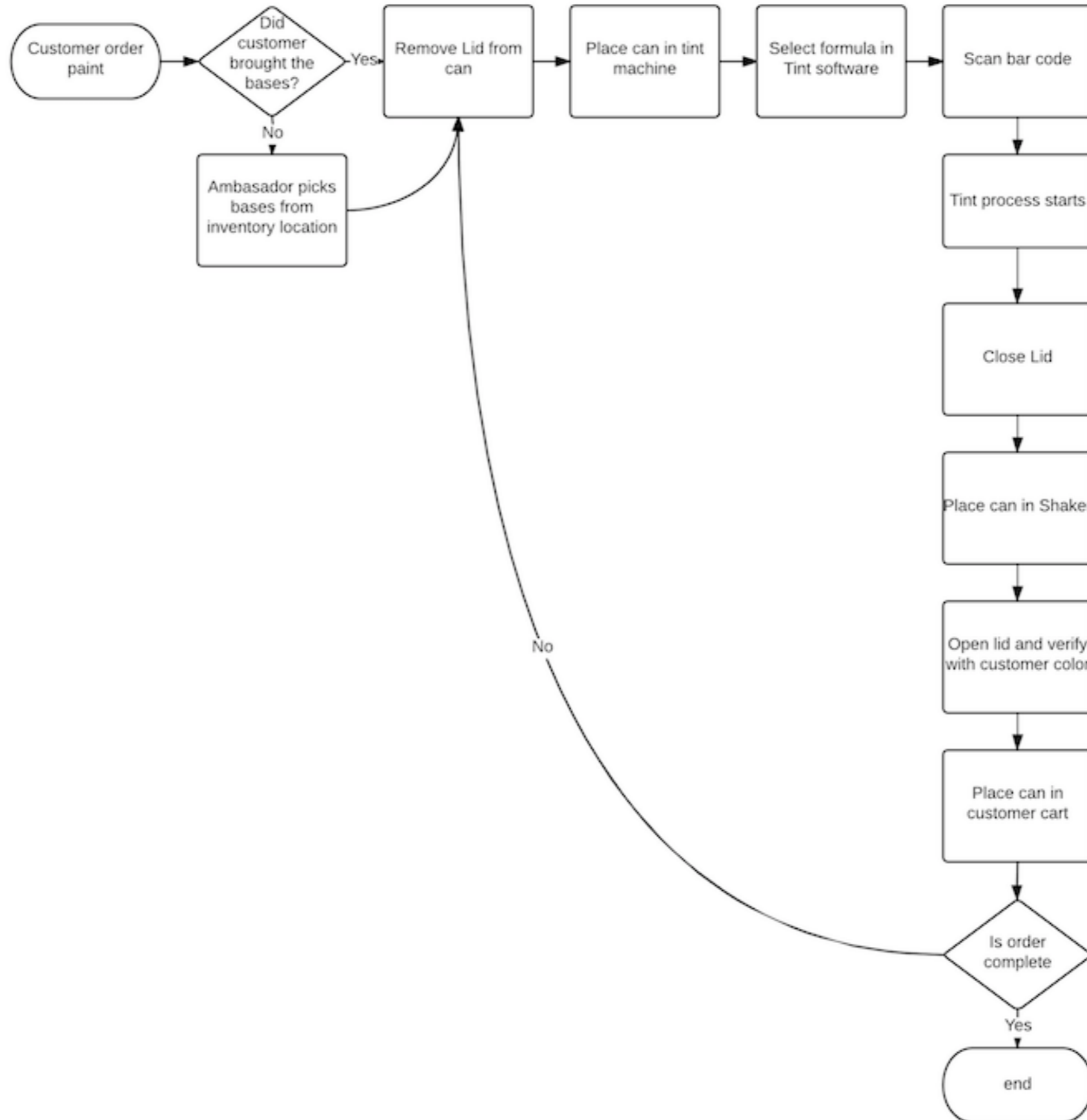
Base. Color shows sum of Number of Records. Size shows sum of Number of Records. The marks are labeled by Base.

Forecasting by product

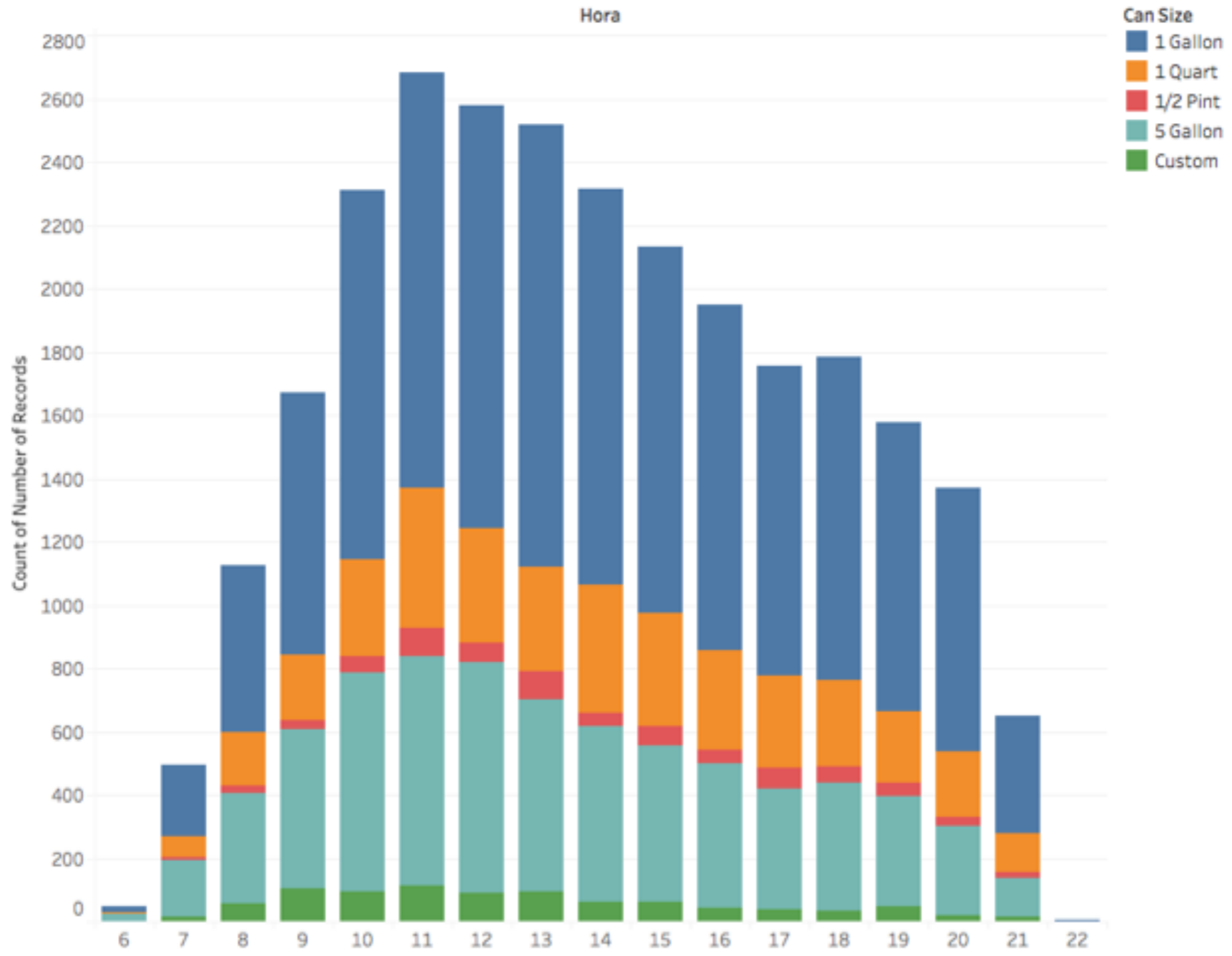
| Quality | Base | Dispense Date | | | | | | | | | | | | | | | | | | | | | Forecast indicator | |
|---------|----------|---------------|-------|-----|------|------|--------|----------|---------|---------|----------|---------|----------|-------|-------|-----|------|------|--------|----------|----|----|--------------------|----------|
| | | 2017 | | | | | | | | | | | | 2018 | | | | | | | | | Actual | Estimate |
| | | Q1 | | | Q2 | | | Q3 | | | Q4 | | | Q1 | | | Q2 | | | Q3 | | | | |
| January | February | March | April | May | June | July | August | Septem.. | October | Novem.. | Decemb.. | January | February | March | April | May | June | July | August | Septem.. | | | | |
| | | 3 | 23 | 12 | 55 | 25 | 18 | 35 | 30 | 30 | 36 | 37 | 37 | 38 | 39 | 40 | 40 | 41 | 42 | 43 | 44 | 44 | | |
| | | 3 | 11 | 14 | 76 | 14 | 164 | 7 | 21 | 13 | 39 | 40 | 41 | 42 | 44 | 45 | 46 | 47 | 49 | 50 | 51 | 52 | | |
| | | 2 | 2 | 2 | 4 | 7 | 11 | 12 | | 16 | 17 | 19 | 21 | 22 | 24 | 26 | 28 | 29 | 31 | 33 | 34 | 36 | | |
| | | 2 | 17 | 17 | 133 | 429 | 100 | 20 | 13 | 14 | 57 | 59 | 60 | 62 | 63 | 65 | 66 | 68 | 69 | 71 | 72 | 74 | | |
| | | 4 | 49 | 68 | 76 | 60 | 56 | 89 | 37 | 54 | 73 | 73 | 74 | 74 | 75 | 75 | 76 | 76 | 77 | 77 | 78 | 78 | | |
| | | | 5 | 10 | 9 | 23 | 11 | 12 | 12 | 5 | 12 | 12 | 12 | 12 | 12 | 12 | 12 | 12 | 12 | 12 | 12 | 12 | | |
| | | 2 | 33 | 57 | 38 | 15 | 14 | 32 | 28 | 23 | 26 | 24 | 23 | 21 | 19 | 17 | 15 | 13 | 12 | 10 | 8 | 6 | | |

Current paint preparation process

Goal is to time each process and identify opportunities



Tints by can size by Hour



Count of Number of Records for each Hora. Color shows details about Can Size. The data is filtered on Store Number,